



# BAMBOO GARDEN SCAVENGER HUNT

Place a check ✓ next to each item you find.

- |                          |   |                          |   |
|--------------------------|---|--------------------------|---|
| <input type="checkbox"/> | The tallest bamboo. Some types grow 3 feet per day! | <input type="checkbox"/> | Bamboo flowers  |
| <input type="checkbox"/> | A yellow and green striped bamboo                   | <input type="checkbox"/> | The smallest bamboo   |
| <input type="checkbox"/> | A <b>node</b> on the stem of the bamboo             | <input type="checkbox"/> | The thickest bamboo stem ( <b>culm</b> )                        |
| <input type="checkbox"/> | Bamboo that is leaning                              | <input type="checkbox"/> | 3 different kinds of bamboo                                     |
| <input type="checkbox"/> | The sound of bamboo in the wind                     | <input type="checkbox"/> | The biggest bamboo leaf you can find                            |
| <input type="checkbox"/> | Something made of bamboo                            | <input type="checkbox"/> | A very dark colored bamboo                                      |
| <input type="checkbox"/> | A turtle  | <input type="checkbox"/> | The one place bamboo does not grow                              |
| <input type="checkbox"/> | The name of an animal that depends on bamboo        | <input type="checkbox"/> | Take a deep breath and thank the bamboo for the air we breathe! |



# CALIFORNIA GARDEN SCAVENGER HUNT

Place a check  next to each item you find.



A plant with very small leaves



A plant that loses its leaves in the summer



Fuzzy or hairy leaves



A plant with “zig zag folds”



Leaves that are pointed up



A tree from California



A plant with sharp spines (do not touch!)



A plant that can be used for medicine



Thick leaves



A pollinator (bee, butterfly, fly, etc.)



A plant with light green leaves



The California State flower



A plant that is not from California



California’s most precious resource



A plant that smells (ask someone from SDBG for help!)



A lizard



# RAINFOREST GARDEN SCAVENGER HUNT

Place a check  next to each item you find.



A plant with very big leaves



A plant that makes cones as large as your head!



A plant climbing or living on another plant



A banana plant



Leaves that are lying flat (not pointed up)



A plant with long, stilt-like roots



Leaves that have pointed tips



Trumpet-shaped flowers



Smooth leaves



Plants growing in water



Roots growing above the ground



A brightly colored plant



A waterfall



Stand under the shade of the trees



A plant with very dark green leaves



Can you hear the sound of the waterfall?





Explore the Garden to see what you can find!

Make sure to stay with your family and on the paths, share what you discover, and have fun.

### A PLANT THAT DOES NOT NEED SOIL TO GROW

Epiphytes or air plants are types of plants that can get the water that they need either from the air or rainfall.

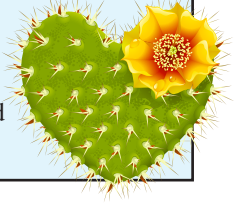


### THE TALLEST TREE THAT YOU CAN SEE

How old do you think the tree is? We can measure the rings that grow on the inside of the trunk each year to tell how old it is. We have tall Torrey Pines here that are over 80 years old!

### A PLANT WITH SPINES (BE CAREFUL)

Why do plants have spines? A lot of plants have spines for protection or to keep them from losing water in hot and dry weather.



### A PLANT THAT YOU CAN EAT

What part of the plant can you eat? Do you think animals eat this plant too?



### A BUTTERFLY

What is the butterfly doing? Does it move fast or slow? Can you see it getting the nectar from flowers?



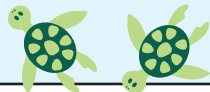
### A FRUIT TREE

What kind of fruit comes from this tree? Have you ever eaten it?



### A TURTLE IN THE POND

What is it doing? Our Pond Sliders are great at using the bottom of their shell to slide off of the shore and into the water. They often come out of the water to warm up in the sunlight.



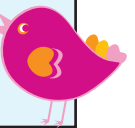
### A YELLOW FLOWER

How do you think color helps the flower? Different colors of flowers can help attract pollinators. Pollinators are insects or birds that carry pollen from one flower to another. Once that happens, a fruit will form with seeds inside!



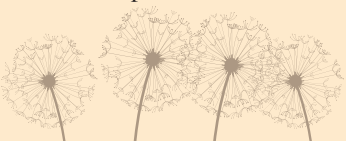
### A BIRD SINGING

Can you try and make the sound of the bird? Why do you think it is singing? Bird calls often let other birds know to come near or stay away. We have over 90 different kinds of birds that visit the Garden!



### A SEED OR SEED POD

What kind of plant is it from?

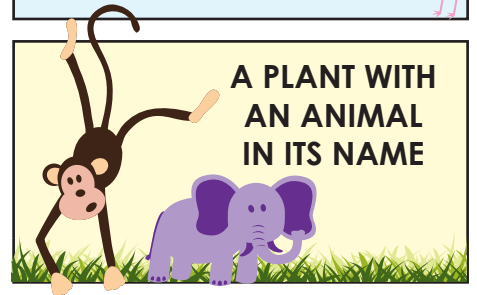


### THE TALLEST GRASS YOU CAN FIND

(hint bamboo is a grass)



### A PLANT WITH AN ANIMAL IN ITS NAME



### A LIZARD

What is the lizard doing? Lizards are great for the plants growing in the Garden because they hunt insects that may be eating our plants.



### A PLANT THAT IS NATIVE TO CALIFORNIA

Where are you from? That is where you are native to. A lot of plants come from only California originally and some are found only in San Diego.



### A PLANT THAT SMELLS (GOOD OR BAD)

Why do you think the plant is smelly? Sometimes it is to attract or keep away things that might eat it.

