

Hello! I'm Rachel, a Conservation Horticulturist at the San Diego Botanic Garden.

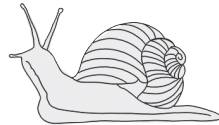
What is botany, exactly?

It's the study of plants, their environment, and their interaction with animals and the world around them. If you learn more about plants, you can start to understand why a plant lives where it does and any cool things the plants can do for people, like uses for food and medicine.

In my job, I take it one step further and use my observations to look at our plants and how they are growing. Kind of like a doctor for plants, I help take care of them and improve their health if they are not doing well.

Sometimes it means watching out for pests like rabbits and insects, or adding fertilizer and water. I ask lots of questions and use all my senses to observe the plants.

I use pruners to trim... soil to put plants into... and fertilizer to make plants grow bigger every day.



This is what it means to be a horticulturist.

Do you want to help grow plants and learn how important they are to their environment and humans?

You too can be a horticulturist.

Word jumble: Hidden in this charm of words are some common terms you may hear while exploring at San Diego Botanic Garden. Can you spot them all?

B	A	M	B	O	O	L	P	C	Y	C	A	D	A	G
S	A	N	C	L	X	A	T	Y	E	Z	H	O	W	I
S	P	I	N	E	F	U	B	F	E	L	U	S	H	A
A	N	C	C	O	F	G	U	A	C	T	U	S	I	P
M	O	O	A	R	D	E	S	E	R	T	S	O	R	T
C	A	N	O	P	Y	D	Y	E	N	R	E	L	A	A
A	P	I	U	J	I	R	A	D	M	A	F	O	I	P
C	O	F	B	O	T	A	B	L	O	V	I	V	N	R
T	W	E	I	Y	A	G	U	B	S	I	N	E	F	O
U	P	R	B	O	T	A	N	I	S	T	C	D	O	O
S	I	M	S	P	I	N	Y	E	D	M	F	E	R	T
C	F	I	R	E	C	R	A	C	K	E	R	C	E	T
A	A	X	T	A	C	A	C	T	U	P	E	I	S	E
W	A	X	Y	L	E	A	V	E	S	A	L	L	T	A
O	O	T	A	S	L	E	A	P	G	U	A	V	A	R

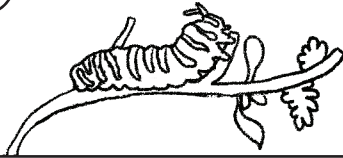
Bamboo
Botanist
Cactus
Canopy
Conifer

Cycad
Desert
Firecracker
Guava
Lush

Moss
Rainforest
Spine
Taproot
Waxy leaves



Draw what you see...



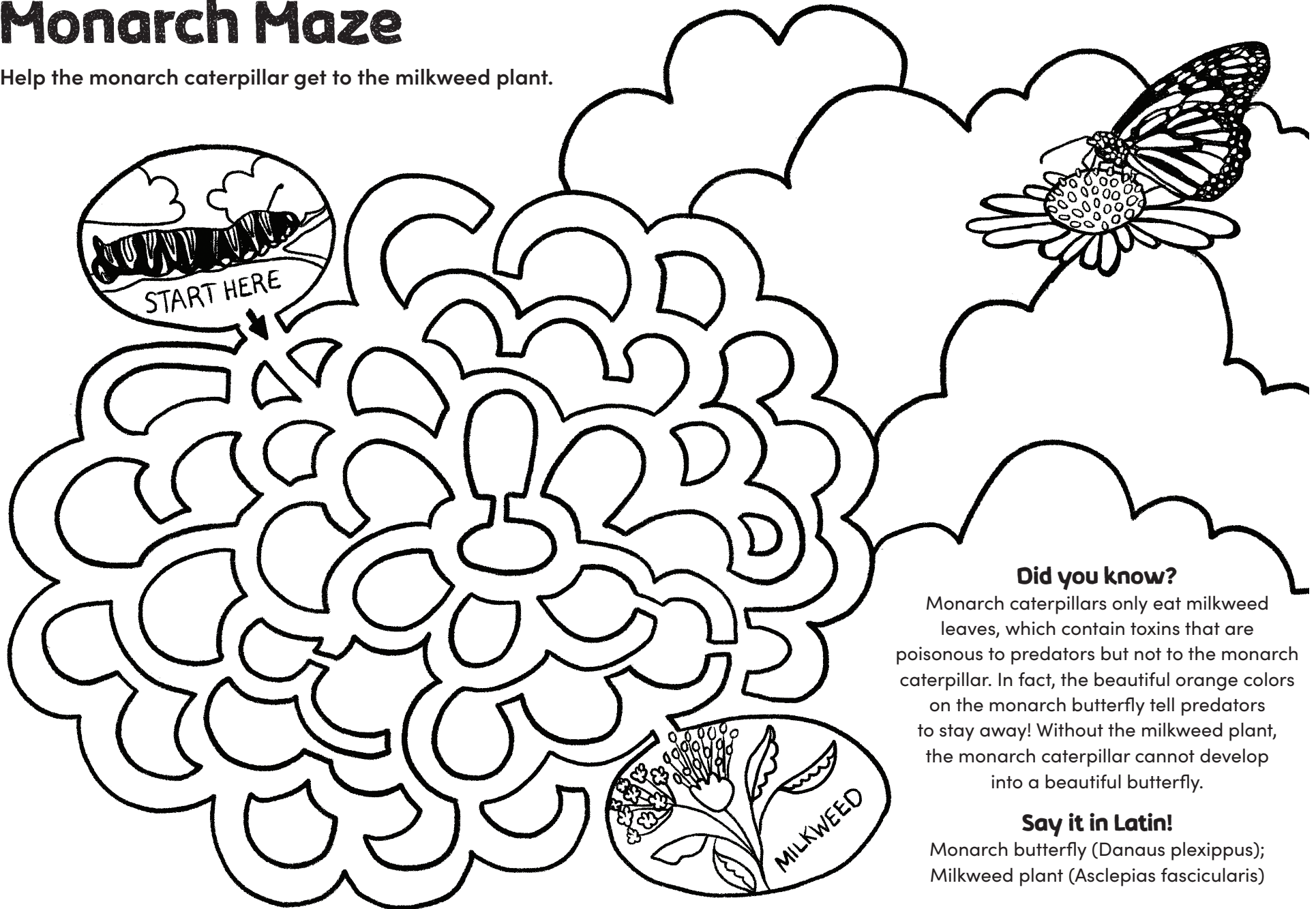
Botany is a science that studies plants, their environment, and their interaction with animals and the world around them. Botanists are keen scientific observers. Find a plant, flower, or pod that catches your eye. Draw a picture and write some notes using these prompts:

- I notice...
- I wonder...
- It reminds me of...



Monarch Maze

Help the monarch caterpillar get to the milkweed plant.



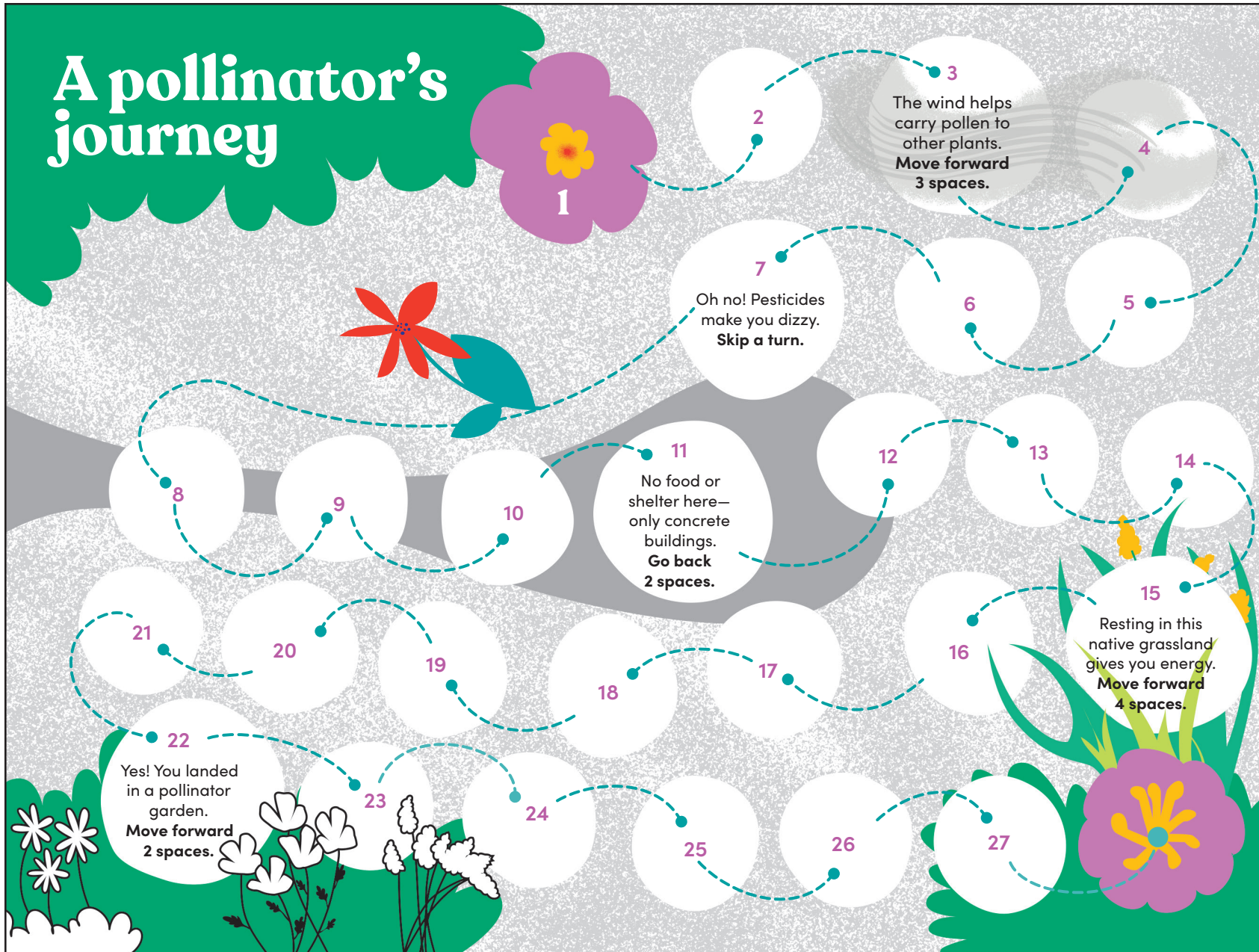
Did you know?

Monarch caterpillars only eat milkweed leaves, which contain toxins that are poisonous to predators but not to the monarch caterpillar. In fact, the beautiful orange colors on the monarch butterfly tell predators to stay away! Without the milkweed plant, the monarch caterpillar cannot develop into a beautiful butterfly.

Say it in Latin!

Monarch butterfly (*Danaus plexippus*);
Milkweed plant (*Asclepias fascicularis*)

A pollinator's journey



Choose your pollinator



To play, cut out your player piece to the right and place it on flower 1. When it's your turn, roll a dice and move forward that many spaces. No dice? Write the numbers 1 to 6 on pieces of paper, fold them, and put them in a bowl. Pick a piece of paper and move forward that many spaces. The first player to reach the end wins.