



Neighborhood Garden Scavenger Hunt

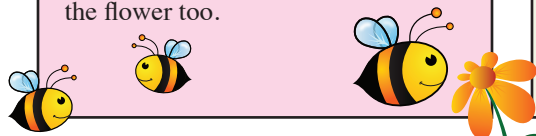


Get outside and see what you can find!

Share what you see by uploading a photo to our social media platforms using **#SDBGardenFunAtHome**

A BEE ON A FLOWER

What is the bee doing? Does it have yellow or orange powder on its legs? Each time it comes to a flower to get nectar, it collects a little pollen from the flower too.



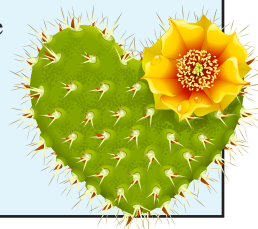
A TREE TALLER THAN YOUR PARENTS

How old do you think the tree is? How could we figure that out? Trees form rings inside their trunks each year that they grow, so we could look inside and see.



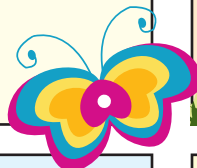
A PLANT WITH SPINES (BE CAREFUL)

Why do plants have spines? A lot of plants have spines for protection or keep them from losing water.



A BUTTERFLY

What is the butterfly doing? Does it move fast or slow? Can you see it getting the nectar from flowers?



A SMELLY PLANT

Why do you think the plant is smelly? Sometimes it is to attract or keep away things that might eat it.



A SNAIL OR SLUG

What is it doing? Is it moving slow or fast? Snails and slugs can eat a lot of different things including old leaves on the ground.

A PLANT THAT YOU DON'T KNOW

How can you figure out what kind of plant it is? You can look take a picture and send it to info@SDBGarden.org for help identifying the plant!



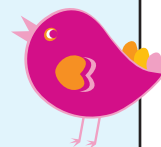
A LINE OF ANTS

Where are they going? Are they going underground? Ants are important in many ways. One way is when they dig in the soil, they let air and water into the ground, which helps plants grow.



A BIRD SINGING

Can you try and make the sound of the bird? Why do you think it is singing? Bird calls can often let other birds know to come near or to stay away.



AN EARTHWORM

Where did you find the earthworm? What is it doing? Earthworms are super important for the soil. They break down old leaves and give us fertilizer to help plants grow. They also help air and water get into the soil.



A PLANT GROWING IN A CRACK IN THE SIDEWALK

How do you think the plant got there? Seeds can travel from plants through the wind and water. Once it finds the right spot with water and sunlight, the plant will grow.



A YELLOW FLOWER

How do you think the yellow color helps the flower? Different colors of flowers can help attract pollinators. Pollinators are insects or birds that carry pollen from one flower to another. Once that happens, a fruit will form with seeds inside!



A FRUIT TREE

What kind of fruit comes from this tree? What does it taste like?



A SEED OR SEED POD

What plant is the seed from? You can plant it in a cup of soil to see what grows.



A PLANT YOU CAN EAT

What part of the plant can you eat? What does it taste like? Do you think any animals eat this plant too?

